

The true coupe.

Inspired innovation



CLK500 Coupe shown with optional Keyless Go, Distronic cruise control, and Packages K3 and K4.

What is a true coupe? **Undeniably, it is something special.** It tugs at your heart, plays to your sense of fashion, and satisfies not simply your need for mobility but your love for the automobile and all it represents. It is a **statement of style.** An expression of your own uniquely enthusiastic character. And a **driver's car.** For decades, some of the most desired coupes in the world have proudly worn the Three-Pointed Star of Mercedes-Benz. Athletic, agile and elegant, perhaps the most recognizable signature of a Mercedes-Benz coupe is that its immediate appeal invariably evolves into lasting affection, not just

from those fortunate enough to drive them, but from everyone who notices which cars on the road are the most special ones. Those, like the new CLK, that make your eyes linger, inspire your imagination, and—once you're behind the wheel—quicken your heartbeat.

The 2003 CLK-Class coupe boldly carries this tradition into a new generation. It's smoother, sleeker, and more stylish, with a **pillarless hardtop design**—a true-coupe tradition long abandoned by other automakers—that says you could only be driving a Mercedes. Innovative in its

design and features—from its **ultra-low-emission engines** that generate as much as 362 horsepower to the way its transmission and accelerator continually **adapt to your driving style.** Supremely confident in its every move—with staggered-width wheels and tires, and advanced suspension and handling systems. And **invitingly accommodating**—with an airy cabin, four individual seats covered in hand-fitted leather, digital Bose® sound, multiple-filtered climate control, and panoramic views of the envious outside world.

Uninhibited desire



CLK500 Coupe shown with optional KeylessGo, Distronic cruise control, and Packages K3 and K4.

The passionate drive of the CLK500 Coupe

Style is often conveyed most convincingly by what you can't see. With **no visible B-pillars** to interrupt your view, the pillarless hardtop design of the new CLK500 Coupe makes every other carmaker's offerings feel like mere two-door sedans. Beneath its sculpted hood awaits a torque-rich **302-hp V-8** that can rush you from 0 to 60 mph in a quick 5.7¹ seconds.² Behind its **17" AMG ultrathin-spoke wheels** are enormous 4-wheel ventilated disc brakes with **composite 4-piston front calipers**. And its 5-speed automatic transmission adapts to your driving demeanor, or lets you express it for yourself with manual-style **Touch Shift** control.

Of course, some of the passion of the CLK500 Coupe is easy to see. Wire-mesh front air intakes flow into **chiseled side sills** and culminate in a large oval **chrome exhaust finisher**. High-performance tires³ are wider at the rear wheels, to apply the V-8's power with confidence, while the front tires communicate crisply through the **speed-sensitive power-assisted rack-and-pinion steering**. Inside, the CLK500 redefines driving style, with a sweeping, double-curved dash, **individually contoured seating for four**, and **chrome-ringed gauges and vents**. If you've never driven a true coupe, take a CLK500 to your favorite road. Put the windows down, then put the throttle down. And see, hear and feel what you've been missing.

¹ Stated rates of acceleration are based upon manufacturer's track results and may vary depending upon model, environmental and road surface conditions, driving style, elevation and vehicle load.

² 2-rated tires are optimized for performance driving and may provide reduced ride comfort, increased tire noise, substantially increased treadwear and greater susceptibility to damage compared with H-rated tires.



A. Chrome exhaust finisher
B. Chrome-ringed instruments
C. 302-hp V-8 engine

Effortless elegance



CLK320 Coupe shown with Option Package K1.

The smooth moves of the CLK320 Coupe

For some, style comes so naturally that it appears to occur without any effort. Enter the CLK320. From the moment its sleek shape catches your eye, it commands your attention. **Crisp lines** flow from its sparkling headlamps, glide **seamlessly over its pillarless cabin** and sweep into its sculpted trunk. **Staggered-width 16" wheels and tires** take on a confident stance, set off by the horizontal contours of the **wraparound lower bodywork**. Put it in motion, and the smooth response of the CLK320 Coupe comes even more naturally.

A **3.2-liter V-6** generates an energetic **215 hp** and propels the CLK320 Coupe from 0 to 60 mph in just 7.4 seconds.¹ A **driver-adaptive 5-speed automatic** transmission offers the hands-on involvement of **Touch Shift** control. The 4-wheel independent **multilink suspension** maneuvers with poise around every corner. And our **Electronic Stability Program (ESP)** and **emergency-sensing Brake Assist** enhance your driving confidence.² Inside, it's pure luxury: Power front seats and steering column with **memory**. A leather-wrapped **multifunction steering wheel**. And with not just two power-retractable side windows but four of them, finding driving pleasure in the CLK320 is a breeze.

¹ Stated rates of acceleration are based upon manufacturer's track results and may vary depending upon model, environmental and road surface conditions, driving style, elevation and vehicle load.

² No system, no matter how sophisticated, can repeal the laws of physics or overcome careless driving actions. Please always wear your seat belt. Braking effectiveness also depends on proper brake system maintenance, and tire and road conditions.



A. Power front seats with memory
B. Multifunction steering wheel
C. 215-hp V-6 engine

Tailored space

An interior that's especially suited to the joy of driving.

Every CLK-Class is designed as a **true 4-passenger coupe**. So while the emphasis is on satisfying the driver, the interior recognizes that many of life's pleasures are best enjoyed in the company of others. For the driver and front passenger, each leather-covered seat and head restraint **power-adjusts 10 ways**, and includes **3-position memory**. The steering column power-adjusts up, down, in and out via a convenient stalk, and you can even set it to rise out of the way when you remove the ignition key. Even the **seat belts** are more accommodating: Shut the door, and a mechanical arm gracefully presents the seat belt to within easy reach of each front-seat occupant, then quietly retracts out of the way once you've buckled up.



CLK500 Coupe shown with optional COMAND system, Parktronic system, Mercedes Go, Distronic cruise control, and Package K1.



A. Front seat-belt presenters
B. Easy-entry feature
C. Folding rear seats

A perfect fit for four

Throughout the airy CLK cabin, the atmosphere is one of open enjoyment. With the four side windows up or down, the pillarless design lends a sense of lightness. Surfaces sweep into one another in gentle curves, inviting your touch. **Hand-finished burl walnut wood** cascades down the central dash and is **edged in chrome** along each door. Between the front seats, a padded center armrest adjusts for height and opens to either side to reveal one of the cabin's **nine storage areas**. And a pop-out drawer in the dash reveals a cupholder for the front passenger.

The **rear cabin** of the CLK is actually designed for passenger comfort—a rare find among coupes. A pair of **individually contoured seats** flank an open console. Both knee room and headroom are generous. The fold-down center armrest includes retractable **dual cupholders**. Head restraints are each adjustable four ways and can be remotely folded down by the driver. The front seats pivot **up and out of the way** for easier rear-seat access. And you can fold either or both of the rear seats down to **extend the cargo space** into a large, flat storage floor.

Forward thinking

Innovations that move the CLK decidedly ahead of ordinary coupes

SmartKey with user-recognition

A world of convenience that fits in your pocket. It can **unlock your CLK's doors**—just the driver's, or both doors plus the trunk. It lets you **remote-close the windows** and optional sunroof as you lock the car. It can **swing the trunk fully open** for you. Set off a panic alarm. And when you give the SmartKey a twist in the ignition, it starts the engine by transmitting an **electronic code**—like a secret password shared only by your SmartKey and your CLK.



Optional Keyless Go

Imagine unlocking your car just by **touching a button** on its door, then starting its engine with a **mere tap** on its gearshift. **All without ever taking the key from your pocket.** Fantasize no longer: the magic is here and available for your oohs and aahs. Keyless Go employs a special version of the SmartKey that communicates your arrival to your CLK, so that the doors and trunk unlock in response to your touch. Settle in, buckle up, and—with your foot on the brake—just tap a button on the shifter to start the car. All of a sudden, using a conventional key in any other car seems...ordinary.



Automatic lighting

Your CLK helps ensure that you're always seen in the best light. Set the headlamp switch to Auto, and an advanced UV/light sensor **turns on the headlamps** automatically as dusk falls, and even **as you enter dark tunnels or parking garages.** After you park, **night security illumination** can use the car's lamps to help light a path for you. And when you remote-unlock your CLK in darkness, **locator lighting** helps you find your way back.



Optional Bi-Xenon headlamps

With projector lamps and jewel-like design, these Bi-Xenon headlamps can dramatically increase your illumination and enhance the appearance of your CLK. Xenon High Intensity Discharge headlamps generate a **bright blue-white light** that more closely approximates your perception in **natural daylight.** The longer range of the low beams can vastly increase your field of vision, while **dynamic level control** helps reduce glare to oncoming drivers. The high beams use the full intensity of the Bi-Xenon lamps to create **remarkable long-range illumination.** Heated, high-pressure **headlamp washers** are included, to help you maintain optimum illumination in foul weather.



Optional Parktronic parking assistance

The Parktronic system uses **ultrasonic sensors** to help you maneuver your CLK in tight spaces. At parking speeds, sensors in the bumpers help you detect some obstacles that might be below your line of sight in front of and behind the car. **Illuminated bar-graph displays** on the dash and rear-cabin ceiling, along with audible signals, help you determine the proximity and direction of the obstacles.

Seating options:

Heated front seats are an option that adds to the already high level of comfort in your CLK. They offer soothing warmth at either of two levels, along with automatic timed shutoff. And optional **multicontour front seats** feature pneumatically adjustable upper and lower lumbar supports, side bolsters and thigh supports, for a more individualized degree of seating comfort.



Optional Distronic adaptive cruise control

Distronic uses a radar transceiver concealed behind the grille to help **maintain your preset following distance** to the car ahead. If the car ahead slows or becomes too close, Distronic can slow your CLK, then **automatically resume** your chosen speed when the space opens up.

Distronic adaptive cruise control is no substitute for active driving involvement. It does not react to stationary objects, nor recognize or predict the curvature and line layout of the road or the movement of vehicles ahead, and it can only apply a maximum of 20% of vehicle braking power. It is the driver's responsibility at all times to be attentive to traffic and road conditions, and to provide the steering, braking and other driving inputs necessary to retain control of the vehicle.

Multifunction display

Your CLK gives you easy access to a plenitude of information and personalized vehicle preferences with its **multifunction steering wheel and display.** Thumb controls on the steering wheel let you **adjust the audio system, answer calls** on the optional phone, and scroll through the **multifunction display,** located inside the speedometer. From here, you can select the automatic lamp functions, activate the easy-exit driver's seat and steering column, and even **retain many of your preferences in your individual SmartKey**—including your seat/mirror



memory and climate control settings. You can also scroll the display to show the radio station, the outside temperature, a digital speed readout, a trip computer, and more.

Comfort zone

Every CLK pleases your senses, including your sense of style

The CLK cabin is a **rejuvenating retreat** into the world of driving pleasure. You'll see it in the gentle double arch of its contoured dash. You can feel it in **dual-zone climate control** that monitors the cabin humidity, compensates for the position of the sun, and includes filters for dust, pollen and odors. You'll hear it in the rich, true **digital Bose® sound**. And every time you take to your favorite road, you will know how well it all works, and how good it makes you feel.



CLK 500 Coupe shown with optional COMAND system, Parktronic system, Keyless Go, Distronic cruise control and Package K3.

Digital Bose sound

Standard on every CLK is a Bose sound system featuring **AudioPilot™ digital processing** and eight speakers. AudioPilot "listens" for unwanted noise in the cabin and automatically adjusts the sound profile to maintain rich, true sound to every seating position with virtually **no perceived change in audio volume**.

Optional 6-disc CD changer

Available with either the standard radio or optional COMAND system is our 6-disc CD changer. It's **glovebox-mounted**, where it's both concealed from sight and within easy reach. And it seamlessly integrates with the CLK's audio system—via an innovative **fiber-optic network**—and the multifunction steering wheel.



A. Optional 6-disc CD changer
B. Optional wood and leather steering wheel
C. Rear-cabin climate control vents

Optional COMAND system

The Cockpit Management and Data (COMAND) system combines the radio, **GPS satellite navigation**, and controls for the optional phone and 6-CD changer into one in-dash unit. A large **color-LCD screen** shows navigation maps in sharp detail, and the system integrates with the multifunction display and steering-wheel controls. When COMAND is not navigating, you can play an **audio CD** in the in-dash CD-ROM drive.

While the navigation system provides directional assistance, the driver must remain focused on safe driving behavior including paying attention to traffic and street signs. The driver should utilize the system's audio cues while driving and should only consult the map or verbal displays once the vehicle has been stopped in a safe place. CD-ROM maps do not cover all areas nor all routes within an area.

Optional wood and leather steering wheel

This hand-finished wood and leather trimmed steering wheel is a stylish option for your CLK. **Polished burl walnut wood** matches the interior trim, and the stitched **glove-soft leather trim** is as enjoyable for your hands as it is for your eyes.

Climate control features

The CLK's **digital climate control** goes beyond dual-zone controls. Two **rear-cabin air vents** are adjustable for volume and direction, and feature their own **4-speed blower**. And while you run errands on cold days, the **REST mode** in your parked CLK can recirculate residual heat for up to 30 minutes to help **keep the cabin warmer** for your return. It can also **ventilate the cabin** on warm days, to help keep it cooler.



CLK320 Coupe shown with optional Keyless Go and Appearance Package.

Driving ambition

The visual transformation of the CLK320 Appearance Package

Why add an option called an Appearance Package to a car that could already get by on looks alone? Simply put, there's no single, common ideal of beauty, so the CLK320 Coupe offers you two appealing choices: the already stunning coupe in standard trim, or the head-turner you see here. The Appearance Package starts outside the car, with **17" wheels** in a sporty **5-spoke design**. They're staggered in width—7.5 inches wide for the front, 8.5 inches at the rear, as are the **225/45ZR17 front and 245/40ZR17 rear high-performance tires.**¹ The larger **chrome exhaust finisher** from the CLK500 is also included. And there's even more inside the cabin. So when you're done gazing dreamily at the vision above, check out the next page.

¹ Z-rated tires are optimized for performance driving and may provide reduced ride comfort, increased tire noise, substantially increased treadwear and greater susceptibility to damage compared with H-rated tires.



A. Enlarged chrome
exhaust finisher
B. 5-spoke 17" wheels



CLK320 Coupe shown with optional heated front seats, COMAND system, Parktronic system, Distronic cruise control, Appearance Package and Package 13.

Fashion statement

The high-style interior of the CLK320 Appearance Package

While the external elements of the optional Appearance Package add a sharper performance edge to the CLK320 Coupe, the cabin is a more dramatic move to the leading edge of style. No polished wood here... Instead, the cool presence of **patterned aluminum** sets off the richness of the leather upholstery. Put yourself in the driver's seat. At your right hand, the leather-trimmed gearshift is **capped in polished chrome**. And under your feet, the rubber-studded pedals are **clad in brushed aluminum**. It's been said that appearances can be deceiving. In the case of the CLK320, the Appearance Package might be the truest expression of its sporting character.



A. Aluminum-clad pedals
B. Chrome-capped gearshift



CLK300 Coupe shown at rear with Option Packages K3 and K4.

Visionary ideas

Advanced technology to uphold the tradition of the true coupe

To Mercedes-Benz engineers, technology is never advanced simply for its own sake. It is to serve people's desires and their needs at once. The pillarless design of the CLK-Class coupe might illustrate this passion best: Here is **an advanced design** that meets the **stringent safety and rigidity standards** for which Mercedes-Benz bodies are legendary, but does so without compromising the **rakish elegance that defines a true coupe** as far more than just a two-door version of a sedan. While every other automaker has long since abandoned the graceful, airy openness that is only possible with no visible B-pillars, the CLK proves that romance can drive technology, so you can drive with passion.

Hidden strengths refined in the crash hall and wind tunnel

The new CLK-Class body provides **40% greater torsional rigidity** than its prior generation, despite the absence of a full B-pillar. This was achieved through numerous advanced technologies, designs and materials, including nearly doubling the amount of **high-strength/low-alloy (HSLA) steel** used in the body. Its strength is further bolstered by such features as a **laser-welded variable-thickness floor pan**, reinforced side sills and pillars, and an **ellipsoidal front bulkhead** that helps to distribute some of the energy of a frontal impact over, under and around the cabin.

The CLK is also **among the most wind-cheating coupes in the world**, with a low drag coefficient and 70% less lift at the front wheels. Air and water management are highly refined, from the arched roofline to such details as **hermetically sealed roof trim**, all-around sealing of the side windows, **full underbody panels**, and optimized shaping of the side mirrors and trunk lid. The result: a remarkably quiet ride and excellent handling stability at speed.



The powerful appeal of immediate response

Both the smooth, muscular **215-hp 3.2-liter V-6** of the CLK320 and the thundering **302-hp 5.0-liter V-8** of the CLK500 provide instant response whenever you summon it. Each uses a strong yet lightweight **high-pressure die-cast alloy block**. Each engine features 3-valve-per-cylinder heads and a two-stage magnesium intake manifold, to generate both a whirlwind of **low-end torque** and free-breathing **top-end stamina**.

And with our new **adaptive accelerator** and electronic throttle, your CLK seems to read your mind through your right foot: More spirited use of the "go" pedal results in greater throttle response with less pedal travel. And even though they dispense their power so freely, both the CLK320 and CLK500 Coupes are certified **Ultra Low Emission Vehicles (ULEVs)**. Response, or responsibility? Choose any two.



CLK500 Coupe shown with optional Distronic cruise control and Package K3.

Command performance

Touch Shift and the adaptive automatic transmission

Every new CLK-Class is equipped with our **electronic 5-speed automatic transmission** that's been praised as a paragon of smooth, well-timed shifting. Its **driver-adaptive control** actually pays attention to your driving style and adjusts its shift patterns to match. Enthusiastic driving holds onto each gear a little longer and downshifts a little sooner. More laid-back driving allows for increased fuel economy. And with our **manual-style Touch Shift control**, just a tap of the gearshift to the left or right of Drive lets you downshift or allow upshifts at your whim. And if you're about to make a passing maneuver, holding the gearshift to the left for a second **automatically pre-selects the optimum gear** for the best acceleration response.



A. 215-hp CLK320 V-6
B. 302-hp CLK500 V-8
C. 5-speed Touch Shift automatic transmission

Gripping certainty

The hands-on confidence of a balanced chassis

Twist the leather-wrapped steering wheel of a new CLK, and its **rack-and-pinion steering** and **staggered-width tires** respond with crisp feedback. Toss the CLK a bumpy road, and its **highly rigid body structure** and **4-wheel multilink suspension** soak it all up with ease. Throw it a corner, and feel the balance of its **rear-wheel-drive layout** and **excellent weight distribution**. And if you send it a curve ball, its **Electronic Stability Program** coaches it until composure can be regained.¹ Handling is in its heritage – after all, the CLK comes from the inventors of the 4-wheel independent suspension. So when it comes to demonstrating poise under pressure, the new CLK has a firm grip on the concept.



¹ No system, no matter how sophisticated, can repeal the laws of physics or overcome careless driving actions. Please always wear your seat belt.



CLK 500 Coupe shown with Option Packages R3 and R4.

Sixteen degrees of separation

The **4-wheel independent multilink suspension** in the CLK uses five links at each rear wheel plus three at each front wheel (16 links in all), for precise positioning of each wheel under virtually all driving conditions. Each rear link serves an independent axis of motion, while as a system they help ensure that the rear wheels move only vertically, for **optimum tire adhesion** and reduced "squat" under hard acceleration. At each front wheel, two lower control arms work in concert with a track rod to **precisely locate each tire** at any steering angle. Separate rear springs and gas-pressurized shocks, plus coil-over struts up front, contribute to the CLK's **smooth ride**.

Braking news

To make the CLK stop with as much vigor as it takes off, 4-wheel disc brakes are just the beginning. A new aluminum master cylinder features an innovative pre-loaded internal spring that **helps reduce the response time of the brakes** when you need them most. Wind-tunnel testing resulted in front brake covers that feed **cooling air** from the inside out—which also helps protect the front brakes better from water spray. And to help the 302-hp CLK 500 shed speed more effectively, it features **enlarged 4-wheel ventilated discs**—13.6" in front and 11.8" at the rear—along with **4-piston front calipers** in a **heat-resisting composite** of aluminum and steel.

Limitless passion

The race-bred soul of the CLK55 AMG

In a tiny orchard town named Affalterbach, about 40 kilometers from Stuttgart, **driving fantasies** are born and raised. This dreamworks is AMG, the origin of so many championship Mercedes-Benz racecars, and of the coveted street-legal Mercedes-AMG models. This is a place where brakes are tested until they glow hot orange. Where **each engine is the handwork of a single craftsman**. Where extreme strength and endurance are gained through German championship touring-car racing, then seamlessly blended with the refined road manners that define a Mercedes-Benz, to create **genuine supercars you can enjoy every day**. This is the birthplace of the incredible new CLK55 AMG Coupe.

More power to move you like never before

The heart of the new CLK55 AMG is the most powerful naturally aspirated engine Mercedes-AMG has ever offered in the States: a handcrafted **362-hp 5,439-cc V-8**. With the full thrust of its **376 lb-ft of peak torque** pouring forth at 4,000 rpm, the CLK55 AMG can rocket you from a standstill to a 60-mph blur in just **5.0 seconds**.¹ Underneath its sculpted engine cover, **forged aluminum pistons** are cooled by specially developed oil jets. **Dual intake ports** feed air into a high-performance two-stage intake manifold. **Camshafts** are aggressively profiled to optimize cylinder charging. And the **low-backpressure exhaust** culminates in dual polished stainless-steel finishers that broadcast your ascent of the power curve in throaty rejoice.

Shifting inspired by Formula 1 racing

The CLK55 AMG driver controls this supercoupe's power through a 5-speed adaptive automatic transmission with numerous performance enhancements. **AMG SpeedShift™** programming provides **35% faster gear changes**, prevents unwanted upshifts in hard corners, can **downshift automatically during braking**, and lets you pre-select the optimum gear for **maximum acceleration**. Tap a button alongside the shifter to engage the racing-inspired **manual mode**, and **you control all upshifts and downshifts** via buttons behind the spokes of the AMG sport steering wheel. In manual mode, SpeedShift only intervenes should you come to a halt in high gear, or reach the redline. The CLK55 AMG puts all of its muscle quite literally at your fingertips.

¹ Stated rates of acceleration are based upon manufacturer's track results and may vary depending upon model, environmental and road surface conditions, driving style, elevation and vehicle load. ² Z-rated tires are optimized for performance driving and may provide reduced ride comfort, increased tire noise, substantially increased treadwear and greater susceptibility to damage compared with H-rated tires.



Performance-enhanced from the ground up

In addition to the massive infusion of power, the CLK55 AMG undergoes a thorough physical transformation as well. Outside, **sculpted lower bodywork** calls your attention to the staggered-width 17" **AMG double-spoke wheels** wearing 225/45R17 front and 245/40R17 rear Z-rated tires.² A discreet **rear spoiler** increases downforce at speed. Underpinning it all is an **AMG sport suspension** with thicker front and rear stabilizer bars, performance-tuned springs and gas-charged shock absorbers. Giant 13.6" front brake discs are **cross-drilled**, internally ventilated and subject to the tenacious grasp of 4-piston fixed-type calipers. Ventilated 11.8" rear discs with dual-piston calipers serve the rear wheels. And all of it serves one goal: pure driving passion.

A driving environment of exquisite detail

The cabin of the CLK55 AMG raises the bar in its finish and furnishings. Deeply contoured Charcoal **AMG-design leather seat bolsters** embrace soft, sanded **nubuck leather inserts** in any of three colors. **Aluminum trim** wears a sand-cast texture. The AMG instrument cluster presents ivory-color gauges—among them a **200-mph speedometer**—in a matte chrome surround. The gauges are backlit at night in **soft indigo blue**. Exclusive **sport front seats** are **heated** and feature our **multicontour design** with pneumatically adjustable lumbar supports, side bolsters and thigh supports. And, as if you'll need anything to improve your outlook from here, the CLK55 includes blue-tinted window glass and a power tilt/sliding glass sunroof.

Constant confidence

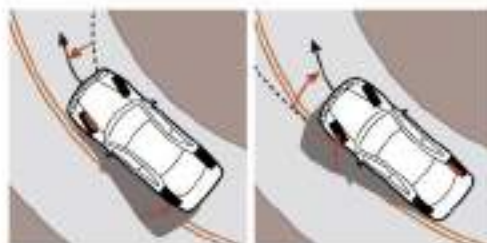
A systematic approach to safety

Like every Mercedes-Benz, the CLK-Class is developed with an **integrated approach to safety** designed to optimize the **driver's ability** to avoid an accident, and the **car's ability** to protect its precious cargo should a collision prove to be unavoidable. **Active safety systems** work in technologically orchestrated unity to enhance stability, control and handling. And they're wrapped in a **highly advanced body structure** that's bolstered by strategic reinforcements of high-strength steel, outfitted with **intelligently integrated restraint systems**, and inspired by **more than half a century of safety leadership** since Mercedes-Benz first patented the original impact-absorbing crumple zone.



More predictable handling, courtesy of ESP

Every CLK-Class features the **dramatic handling advantages** of our pioneering Electronic Stability Program (ESP). ESP continually monitors your steering and braking actions, and compares them to where the car is actually going. When you're cornering, ESP can detect the onset of fishtailing (oversteer) or plowing (understeer), and it responds by braking individual wheels or reducing excess engine power, to **get you back on course**.¹ ESP also incorporates ASR traction control, which helps control wheelspin during acceleration. Even the most forward-thinking driver can't predict what lies around the next curve in the road. That's why we gave every CLK the handling edge of ESP.



The most comprehensive air bag protection in a coupe

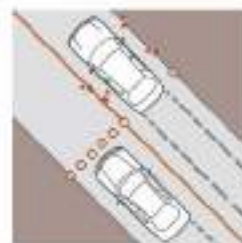


The integrated restraint system in the CLK-Class offers **10-way air bag protection**, more than any other automaker's two-door cars. There are front air bags with **dual-stage inflation based on impact severity** for both the driver and

front passenger. And each of the four CLK occupants is provided with a **side-impact air bag** along with **Head Protection Curtains** that run the length of the side windows. And of course, all four seats in the CLK are provided with 3-point seat belts featuring **Emergency Tensioning Devices** (ETDs) to remove slack in a collision exceeding the system's deployment threshold, along with **belt force limiters** designed to better distribute impact energy between the front seat belts and front air bags, and to help reduce the peak impact forces on belted rear passengers.²

Brake Assist

Mercedes-Benz research has shown that drivers tend not to brake hard enough, soon enough, in an emergency. That's why we developed Brake Assist. When **Brake Assist senses a panic stop** from the speed at which you depress the brake pedal, it automatically applies **all available power braking boost** immediately.³ By helping to eliminate the delay caused by human nature, Brake Assist can potentially **reduce your overall stopping distances** when it matters most.



CLK 320 Coupe shown with optional Keyless Go and Package K3. ¹ No system, no matter how sophisticated, can repeal the laws of physics or overcome careless driving actions. Please always wear your seat belt. ² **WARNING:** THE FORCES OF A DEPLOYING AIR BAG CAN CAUSE SERIOUS OR FATAL INJURY TO A CHILD UNDER AGE 13. THE SAFEST SEATING POSITION FOR YOUR CHILD IS IN THE REAR SEAT, BELTED INTO AN APPROPRIATE, PROPERLY INSTALLED CHILD SEAT, OR CORRECTLY WEARING A SEAT BELT IF TOO LARGE FOR A CHILD SEAT. **A CHILD UNDER 13 MUST NOT USE THE FRONT SEAT** UNLESS THE CHILD IS BELTED INTO AN APPROPRIATE, PROPERLY INSTALLED **BABYSMART-COMPATIBLE** CHILD SEAT. A CHILD UNDER 13 WHO IS TOO LARGE FOR A CHILD SEAT MUST NOT USE THE FRONT SEAT. SEE OPERATOR'S MANUAL FOR ADDITIONAL WARNINGS AND INFORMATION ON AIR BAGS, SEAT BELTS AND CHILD SEATS. ³ Braking effectiveness also depends on proper brake system maintenance, and tire and road conditions. Illustration is not intended to demonstrate actual reduction in stopping distance.

SPECIFICATIONS

ENGINE AND DRIVETRAIN

	CLK 320 COUPE	CLK 500 COUPE	CLK 55 AMG COUPE ¹
Engine	3,199-cc SOHC 18-valve 90° V-6 . High-pressure die-cast alloy cylinder block , alloy heads.	4,966-cc SOHC 24-valve 90° V-8 . High-pressure die-cast alloy cylinder block , alloy heads.	AMG-built 5,439-cc SOHC 24-valve 90° V-8 . High-pressure die-cast alloy cylinder block , alloy heads.
Net power	215 hp @ 5,700 rpm	302 hp @ 5,600 rpm	362 hp @ 5,750 rpm
Net torque	229 lb-ft @ 3,000–4,600 rpm	339 lb-ft @ 2,700–4,250 rpm	376 lb-ft @ 4,000 rpm
Compression ratio	10.0:1	10.0:1	11.0:1
Fuel requirement	Premium unleaded gasoline, 91 pump octane.	Premium unleaded gasoline, 91 pump octane.	Premium unleaded gasoline, 91 pump octane.
Fuel and ignition system	ME 2.8 engine management. Integrated sequential multipoint fuel injection and phased twin-spark ignition includes individual cylinder control of fuel spray, spark timing and phase, and antiknock. Electronic throttle includes adaptive accelerator , which provides more rapid throttle opening in response to the speed at which accelerator pedal is depressed. Two high-energy ignition coils and two spark plugs per cylinder, with 100,000-mile spark plug intervals.		
Intake system	Magnesium 2-stage resonance intake manifold increases intake runner length at lower rpm for improved response.		
Transmission	Driver-adaptive electronic 5-speed automatic . Touch Shift allows driver to manually downshift and allow upshifts by nudging the shift lever left or right from the Drive position. Shift into Optimum Gear programming allows one-touch selection of the best gear for maximum acceleration by holding the shift lever to the left of Drive for one second. Driver-selectable winter mode starts vehicle moving in 2nd gear or a second Reverse gear, to help improve takeoff on slippery surfaces. Display in instrument cluster indicates selected gear range and standard/winter mode.	Not available.	AMG SpeedShift programming provides up to 35% faster gear changes, automatically downshifts during braking, prevents unwanted upshifting while cornering, and features torque converter lockup in all forward gears. Fingertip manual mode allows direct-access shifting through forward gears via buttons on back of upper steering-wheel spokes, and will automatically intervene only to induce an upshift at redline and select 1st gear when the vehicle stops.
AMG SpeedShift™ with fingertip manual mode	Not available.	Not available.	

TRACTION AND STABILITY

Electronic Stability Program (ESP)
and **Automatic Slip Control (ASR)**

ESP compares the driver's intended course, via steering and braking inputs, to the vehicle's response, via lateral acceleration, rotation (yaw) and individual wheel speeds. **ESP** then brakes individual front or rear wheels and/or reduces excess engine power as needed to help correct understeer (plowing) or oversteer (fishtailing). **ESP** incorporates the functions of **ASR traction control**, which senses drive-wheel slip and individually brakes the slipping wheel or wheels, and/or reduces excess engine power, until control is regained.²

CHASSIS


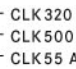

	CLK 320 COUPE	CLK 500 COUPE	CLK 55 AMG COUPE ¹
Suspension type	4-wheel independent. Front 3-link with antidive geometry. Rear 5-arm multilink with geometry for antisquat and alignment control.		AMG-tuned front coil springs over AMG gas-pressurized shock absorbers. Separate AMG-tuned rear coil springs and AMG gas-pressurized shock absorbers. Enlarged front and rear stabilizer bars.
Spring and damping system	Front coil springs over gas-pressurized shock absorbers. Separate rear coil springs and gas-pressurized rear shock absorbers. Front and rear stabilizer bars.		
Steering	Rack-and-pinion with speed-sensitive power assist and integral hydraulic damper. 3.0 steering-wheel turns, lock-to-lock.		Turning circle: 35.3 ft/10.76 m, curb-to-curb.
Wheels , aluminum-alloy, standard	7-spoke design, 7.0Jx16 front and 8.0Jx16 rear.	AMG ultrathin-spoke monoblock design, 7.5Jx17 front and 8.5Jx17 rear.	Polished AMG double-spoke design, 7.5Jx17 front and 8.5Jx17 rear.
with optional Appearance Package	5-spoke design, 7.5Jx17 front and 8.5Jx17 rear.	Not available.	Not available.
Tires , steel-belted radial, standard	205/55HR16 front and 225/50HR16 rear , all-season performance.	225/45ZR17 front and 245/40ZR17 rear , high-performance. ³	225/45ZR17 front and 245/40ZR17 rear , high-performance. ³
with optional Appearance Package	225/45ZR17 front and 245/40ZR17 rear , high-performance. ³	Not available.	Not available.
Brakes , dual-circuit power-assisted	Front: 11.8" internally ventilated discs with single-piston floating calipers. Rear: 11.4" solid discs with dual-piston fixed-type calipers.	Front: 13.6" internally ventilated discs with composite 4-piston fixed-type calipers. Rear: 11.8" internally ventilated discs with dual-piston fixed-type calipers.	Front: 13.6" cross-drilled and internally ventilated discs with enlarged AMG composite 4-piston calipers. Rear: 11.8" internally ventilated discs with dual-piston fixed-type calipers.
Antilock Braking System (ABS) and Brake Assist	ABS senses impending wheel lockup under heavy braking and pumps the front brakes individually or the rear brakes together (to help maintain stability) as needed up to 30 times per second, to prevent lockup and maintain steering ability. Brake Assist senses emergency braking via the speed at which the driver presses the brake pedal and immediately applies maximum available power boost, potentially reducing the overall stopping distance by eliminating the delay caused by a common human tendency not to brake hard enough, soon enough. Letting up on the brake pedal releases Brake Assist. ⁴		

PERFORMANCE

	CLK 320 COUPE	CLK 500 COUPE	CLK 55 AMG COUPE ¹
Acceleration , 0–60 mph ⁵	7.4 seconds	5.7 seconds	5.0 seconds
Emission certification	Ultra Low Emission Vehicle (ULEV).	Ultra Low Emission Vehicle (ULEV).	Low Emission Vehicle (LEV).
DIMENSIONS			
Wheelbase	106.9 in/2,715 mm	106.9 in/2,715 mm	106.9 in/2,715 mm
Overall length	182.6 in/4,638 mm	182.6 in/4,638 mm	182.6 in/4,638 mm
Overall height	55.4 in/1,406 mm	55.4 in/1,406 mm	55.7 in/1,414 mm
Overall width	68.5 in/1,740 mm	68.5 in/1,740 mm	68.5 in/1,740 mm
Track , front	58.8 in/1,493 mm	58.9 in/1,497 mm	58.9 in/1,495 mm
Track , rear	58.0 in/1,474 mm	58.2 in/1,478 mm	58.0 in/1,474 mm
Coefficient of drag	0.29	0.30	0.30
Curb weight	3,515 lb/1,594 kg	3,585 lb/1,626 kg	3,635 lb/1,657 kg
Headroom (front—rear)	38.5 in/979 mm—36.3 in/922 mm	38.5 in/979 mm—36.3 in/922 mm	38.5 in/979 mm—36.3 in/922 mm
(with optional sunroof, front—rear)	37.1 in/941 mm—35.8 in/908 mm	37.1 in/941 mm—35.8 in/908 mm	37.1 in/941 mm—35.8 in/908 mm
Legroom (front—rear)	42.0 in/1,067 mm—33.0 in/837 mm	42.0 in/1,067 mm—33.0 in/837 mm	42.0 in/1,067 mm—33.0 in/837 mm
Shoulder room (front—rear)	53.2 in/1,351 mm—49.3 in/1,252 mm	53.2 in/1,351 mm—49.3 in/1,252 mm	53.2 in/1,351 mm—49.3 in/1,252 mm
Cabin capacity	84.0 cu ft/2,378 liters	84.0 cu ft/2,378 liters	84.0 cu ft/2,378 liters
(with optional sunroof)	81.5 cu ft/2,308 liters	81.5 cu ft/2,308 liters	81.5 cu ft/2,308 liters
Cargo capacity	10.4 cu ft/294 liters	10.4 cu ft/294 liters	10.4 cu ft/294 liters

¹ See your dealer regarding availability. ² No system, no matter how sophisticated, can repeal the laws of physics or overcome careless driving actions. Performance is limited by available traction, which snow, ice and other conditions can affect. Always drive carefully, consistent with conditions. Best performance in snow is obtained with winter tires. Please always wear your seat belt. ³ Z-rated tires are optimized for performance driving and may provide reduced ride comfort, increased tire noise, substantially increased treadwear and greater susceptibility to damage compared with H-rated tires. ⁴ Braking effectiveness also depends on proper brake system maintenance, and tire and road conditions. ⁵ Stated rates of acceleration are based upon manufacturer's track results and may vary depending upon model, environmental and road surface conditions, driving style, elevation and vehicle load.

EQUIPMENT

 CLK320 COUPE
 CLK500 COUPE
 CLK55 AMG COUPE¹




EXTERIOR FEATURES

- — — Atlas Grey grille with four chrome ribs and chrome surround.
- ● ● Black grille with four chrome ribs and chrome surround.
- ● ● AMG-design sculpted front air dam with mesh air intakes, side skirts and rear apron.
- — ● Color-keyed AMG-design rear spoiler on edge of trunk lid.
- ● — Chrome exhaust finisher (enlarged on CLK500 and CLK320 with optional Appearance Package).
- ● ● Low-backpressure exhaust system with dual polished stainless-steel finishers.
- ² ○² ● Power tilt/sliding tinted glass sunroof with one-touch express-open/close.
- — — Neutral-tinted glass.
- ● ● Blue-tinted glass.
- ● ● Variable-focus halogen headlamps with clear high-impact polycarbonate lenses.
- ● ● Halogen front foglamps, in front apron.
- ● ● Single red rear foglamp, integrated in driver's side taillamp cluster.
- ● ● Driver-selectable light-sensing headlamps can be set via the Auto position of the headlamp switch to automatically illuminate in darkness, or when entering dark tunnels or parking garages.
- ● ● Driver-programmable Daytime Running Lamps illuminate low-beam headlamps at reduced intensity (full intensity for optional Bi-Xenon lamps) in daylight, with auto-on override in darkness.
- ● ● Automatic lamp substitution uses a nearby lamp if a critical bulb fails.
- ● ● Touch Turn Signals flash three times with one touch of turn-signal lever, for lane-changing. Auxiliary LED turn signal indicators are integrated with side mirrors.
- ● ● Dual power mirrors, linked to driver's seat memory and automatically heated. Auto-dimming left-side mirror. Parking-assist right-side mirror can be programmed to tilt down upon shifting to Reverse.
- ● ● Electrically heated rear window with auto-shutoff based on time and outside temperature.
- ● ● Dual windshield wipers with aero wiper blades. Heated washer nozzles, lines and reservoir. Infrared rain sensor automatically adjusts wiper speed and intermittent wiper frequency from infinite delay to fast wiping speed, based on amount of rainfall measured on windshield.

LOCKING AND SECURITY

- ● ● SmartKey remote central locking system uses redundant infrared and radio-frequency signals for improved range, and rolling-code signal for protection from transmitter cloning.
- ● ● SmartKey uses an electronic code to unlock the steering column and ignition. Removing SmartKey from ignition disables engine computer to help prevent unauthorized starting of the engine.
- ● ● SmartKey remote control integrates door lock/unlock buttons, remote trunk opener, removable valet key and panic alarm. Driver may selectively unlock only the driver's door and fuel filler, or both doors plus the trunk and fuel filler.
- ● ● Driver-programmable user-recognition feature links each SmartKey to driver's preferences (up to three individual users per car). Each SmartKey recalls for its assigned driver: memory features for driver's seat, outside mirrors and power steering column position; vehicle configuration settings from multifunction display, including language and lighting modes; and various climate control settings.
- ● ● SmartKey offers infrared-remote opening/closing of windows (and optional sunroof, if equipped) from outside the car.
- ● ● Driver-programmable driveaway locking can automatically lock all the doors when the car reaches 9 mph.
- ● ● Night security illumination uses the car's exterior lights to help illuminate a path after parking. Driver-programmable intervals allow lights to stay on for 60, 45, 30 or 15 seconds, or not at all.
- ● ● Locator lighting uses the car's lights to help light a return path when the car is remote-unlocked in darkness. Unlocking car activates illuminated entry system, which includes interior lighting and entrance lamps in both doors.
- ● ● Automatic anti-theft alarm system with towaway protection, remote panic feature, and automatic notification via Tele Aid system.³
- ● ● Emergency trunk release inside cargo area, illuminated for 60 minutes after trunk lid is closed.
- ● ● Integrated 3-button garage door control, compatible with HomeLink[®] components and some other systems.

¹ See your dealer regarding availability. ² Only available as part of an Option Package. See options listing on next page. ³ First year's Tele Aid service is provided at no additional cost with your subscription and includes 30 minutes airtime (including required acquaintance call). Subscription is required for service to be active. Tele Aid operates only where cellular and GPS coverage are available. Owner must authorize stolen vehicle tracking and file a police report.

 CLK320 COUPE
 CLK500 COUPE
 CLK55 AMG COUPE

INTERIOR FEATURES

- ● ● Multifunction steering wheel provides convenient, additional controls for basic functions of audio system and optional phone, plus operation of multifunction display (see Instrumentation, next page).
- — ● Fingertip manual shift buttons behind steering-wheel spokes.
- ● ● Power front and rear side windows, with one-touch express-up/down for front windows.
- ● ● 4-way (tilt/telescoping) power steering column, position linked to driver's seat memory.
- ● ● Driver-programmable easy-entry/exit feature moves driver's seat rearward and/or raises steering column when key is removed from ignition.
- ● ● Electronic cruise control with digital speed readout in multifunction display upon engagement.
- ● ● Auto-dimming rearview mirror.
- ● ● Delayed-shutoff front and rear courtesy lamps. Entrance lamps in both doors.
- ● ● Dual front reading lamps.
- ● ● Dual sun visors with illuminated vanity mirrors.
- ● ● Front center armrest with dual enclosed storage compartments. Illuminated 2-tier glovebox.
- ● ● Pockets in both doors. Parcel net in right front footwell.
- ● ● Retractable front cupholder in dash.
- ● ● Magazine pockets on both front seatbacks. Open center console between rear seats.
- ● ● Rear center armrest with slide-out dual cupholder.
- ● ● Illuminated, carpeted trunk with tie-down hooks.

CLIMATE CONTROL

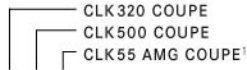
- ● ● CFC-free automatic climate control with digital dual temperature and airflow controls.
- ● ● Electrostatic dust filter.
- ● ● Activated charcoal filter with smog-sensing automatic recirculation of filtered cabin air.
- ● ● 4-way sun sensor. Humidity sensor.
- ● ● Rear-cabin air vents with separate rear-cabin blower control.
- ● ● REST mode can ventilate cabin or help keep cabin warmer using residual heat for up to 30 minutes after car is turned off.
- ● ● Tunnel mode offers one-touch closing of all windows (and sunroof, if equipped) via climate-control air recirculation button.

SEATING AND TRIM

- ● ● 10-way power front seats, each with 3-position memory. Driver's seat memory includes steering column and outside mirror positions. Memory stations are linked to each SmartKey's user-recognition feature.
- — ● AMG-design sport front seats.
- ○ ● Heated front seats.
- ¹ ○¹ ● Multicontour front seats with pneumatic side, lumbar and thigh supports.
- ● ● Easy-entry/exit system: When either front seatback is folded forward, the entire seat moves up and forward for easier access to rear cabin. Seat returns to its previous position when seatback is returned upright.
- ● ● Dual individually contoured rear seats.
- ● ● 60/40-split folding rear seatbacks and flip-forward seat cushions.
- ● — Premium leather upholstery on seating surfaces, head restraints, front-seat side panels and magazine pockets, and door trim inserts.
- — ● AMG-design two-tone leather upholstery featuring soft, sanded nubuck leather for perforated seat center panels and door trim inserts.
- ● — Leather-trimmed 4-spoke steering wheel and shift knob.
- — ● AMG-design leather-trimmed 4-spoke steering wheel and shift knob.
- ● — Hand-polished burl walnut wood trim on doors, dash and console.
- — ● AMG aluminum trim with polished chrome outlining on doors, dash and console.
- ● ● Polished chrome outlining for wood or aluminum trim and vent registers.
- ● ● Stainless-steel door sill trim (with AMG insignia on CLK55 AMG).
- ● ● Velour floor carpeting and floor mats (exclusive AMG floor mats on CLK55 AMG).

● STANDARD ○ OPTIONAL — NOT AVAILABLE

EQUIPMENT



CLK 320 COUPE
CLK 500 COUPE
CLK 55 AMG COUPE¹

AUDIO AND COMMUNICATIONS

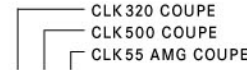
- • • Bose® sound system with 8 speakers, including a dash-mounted center fill speaker and a 9.1" Nd® Neodymium Iron Boron high-efficiency woofer. Bose AudioPilot™ digital processing helps compensate for unwanted ambient noise.
- • • AM/FM stereo/weatherband radio with scan and dual-sensitivity seek tuning, plus concealed autoreverse cassette player with music search. In-dash audio system operating panel integrates controls and displays for radio, cassette player, optional CD changer and optional portable digital telephone.
- • • Fiber-optic network offers precise, high-speed communication among components. Factory preparation for optional CD changer and cellular phone using fiber-optic network.
- • • Tele Aid uses Global Positioning System (GPS) satellites to determine the current location of your car, plus a cellular link to provide 24-hour contact with Mercedes-Benz for emergency aid (SOS button), information (i-button) or Roadside Assistance (wrench button). Automatic Collision Notification engages SOS function if an air bag or Emergency Tensioning Device (ETD) deploys. Tele Aid also includes Automatic Alarm Notification (which alerts Mercedes-Benz to contact you if the antitheft alarm is set off), stolen vehicle tracking, and remote keyless unlocking service.²
- • • Tele Aid Concierge Service, standard with basic Tele Aid subscription, offers personal services via the i-button, including arrangements for restaurant, hotel, airline or car-rental reservations, tickets to cultural and sporting events or tourist attractions, and delivery of flowers or gifts.²

RESTRAINT SYSTEMS

- • • Integrated Restraint System: Driver and front passenger are each provided with a front air bag with dual deployment levels based on impact severity, a side-impact air bag, and a 3-point seat belt with an Emergency Tensioning Device (ETD) and dual-stage belt force limiter.³ Rear passengers are each provided with a door-mounted side-impact air bag and a 3-point seat belt with ETD and belt force limiter.
- • • Head Protection Curtains: In a side impact exceeding a preset threshold, a multi-chamber air bag deploys to cover the front and rear side windows on the affected side of the car.
- • • Occupancy sensor prevents the front passenger's front and side-impact air bags from deploying if the seat is unoccupied. An ETD will not deploy if seat belt is unfastened. Automatic Collision Notification engages Tele Aid SOS function if an air bag or Emergency Tensioning Device (ETD) deploys.²
- • • Universal LATCH system (Lower Anchors and Tethers for Children) at rear seating positions, as well as selectable seat-belt retractors at all passenger seating positions, help secure child seats.³
- • • Front seat belts include height-adjustable shoulder belts and lower points attached to seat frames. Rear seat belts include automatically height-adjusting shoulder belts.
- • • 4-way adjustable front head restraints include automatic power height adjustment as seat is moved fore-aft (with manual override). Dual 4-way adjustable rear head restraints can be remotely retracted by the driver for improved rearward vision when the rear seats are unoccupied.

INSTRUMENTATION

- • — Electronic analog speedometer, tachometer and quartz clock, all with black faces and white markings, glacier blue backlighting, and chrome rings.
- — • AMG-design ivory-color gauge faces, including 200-mph speedometer, all with chrome rings and soft blue nighttime backlighting. Matte chrome instrument cluster surround.
- • • Electronic bar-graph fuel and coolant temperature gauges. Digital display for odometer and Touch Shift gear/mode selection.
- • • Multifunction display in speedometer face can be scrolled via steering-wheel controls to operate and display various menus and vehicle features:
Odometer, resettable trip meter and outside temperature indicator.
Digital speedometer, Flexible Service System (see below), and engine oil-level check.
Radio station, cassette player, CD player (optional)/CD changer (optional).
Navigation system route guidance (optional).
Distronic adaptive cruise control settings (optional).
Vehicle reminder and malfunction messages.
Trip computer (elapsed time, fuel consumption, distance to empty).
Driver-programmable settings for instrument cluster, clock, lighting, vehicle and convenience features.
Cellular phone book (optional).
Numerous driver-programmed preferences are stored in each user's dedicated SmartKey.
- • • Flexible Service System calculates distance remaining to next basic maintenance service based on actual driving conditions, some indicators of oil condition, and engine loads, rpm and operating temperatures.



CLK 320 COUPE
CLK 500 COUPE
CLK 55 AMG COUPE

INDIVIDUAL OPTIONS

- ○ ○ Distronic adaptive cruise control.
- ○ ○ Parktronic audio-visual parking assistance system.
- ○ ○ Keyless Go vehicle entry and starting system.
- 4 — 4 ○ Power rear-window sunshade with one-touch express-up/down.
- ○ • Heated front seats.
- 1 ○ 1 • Multicontour front seats with pneumatically adjustable side, lumbar and thigh supports.
- ○ ○ Ski sack and rear center armrest pass-through.
- ○ — Leather and walnut trimmed steering wheel.
- ○ ○ COMAND integrated navigation system, radio and single-CD player/CD-ROM drive. In-dash navigation system uses GPS satellites to pinpoint the current location of your car, and map databases on CD-ROM.⁵
- ○ ○ Integrated 6-disc CD changer, mounted in glovebox.
- ○ ○ Integrated Motorola V60™ dual-band digital portable telephone.
- ○ ○ Integrated Motorola V60 dual-band digital portable telephone with voice control system for operation of commonly used telephone and audio system features.
- ○ 6 — Two-tone leather upholstery and patterned aluminum interior trim (available only by special order).
- ○ ○ Metallic paint.

OPTION PACKAGES

- ○ — **Package K3:**
Power tilt/sliding tinted glass sunroof with one-touch express-open/close.
Power rear-window sunshade with one-touch express-up/down.
- ○ ○ **Package K4:**
Bi-Xenon High Intensity Discharge projector low-beam and high-beam headlamps.
Heated headlamp washers.
- 1 — **CLK 320 Appearance Package:**
Four 5-spoke alloy wheels, 7.5Jx17 front and 8.5Jx17 rear.
225/45ZR17 front and 245/40ZR17 rear high-performance tires.⁷
Enlarged chrome exhaust finisher.
Patterned aluminum interior trim on doors, dash and console.
Sport shift knob with chrome trim.
Rubber-studded brushed aluminum pedals (including parking brake).

• STANDARD ○ OPTIONAL — NOT AVAILABLE

¹ See your dealer regarding availability.

² First year's Tele Aid service is provided at no additional cost with your subscription and includes 30 minutes of service (including required acquaintance call). Subscription is required for service to be active. Tele Aid operates only where cellular and GPS coverage are available. Owner must authorize stolen vehicle tracking and file a police report.

³ **WARNING: THE FORCES OF A DEPLOYING AIR BAG CAN CAUSE SERIOUS OR FATAL INJURY TO A CHILD UNDER AGE 13. THE SAFEST SEATING POSITION FOR YOUR CHILD IS IN THE REAR SEAT, BELTED INTO AN APPROPRIATE, PROPERLY INSTALLED CHILD SEAT, OR CORRECTLY WEARING A SEAT BELT IF TOO LARGE FOR A CHILD SEAT. A CHILD UNDER 13 MUST NOT USE THE FRONT SEAT UNLESS THE CHILD IS BELTED INTO AN APPROPRIATE, PROPERLY INSTALLED BABYSMART-COMPATIBLE CHILD SEAT. A CHILD UNDER 13 WHO IS TOO LARGE FOR A CHILD SEAT MUST NOT USE THE FRONT SEAT. SEE OPERATOR'S MANUAL FOR ADDITIONAL WARNINGS AND INFORMATION ON AIR BAGS, SEAT BELTS AND CHILD SEATS.**

⁴ Only available as part of an Option Package. See options listing above.

⁵ Deletes standard cassette player and dash pocket. CD-ROM maps do not cover all areas nor all routes within an area. One regional CD-ROM is included with vehicle.

⁶ Vehicles with special-order equipment, colors or color combinations incur a one-time surcharge and may require additional production time.

⁷ Z-rated tires are optimized for performance driving and may provide reduced ride comfort, increased tire noise, substantially increased treadwear and greater susceptibility to damage compared with H-rated tires.